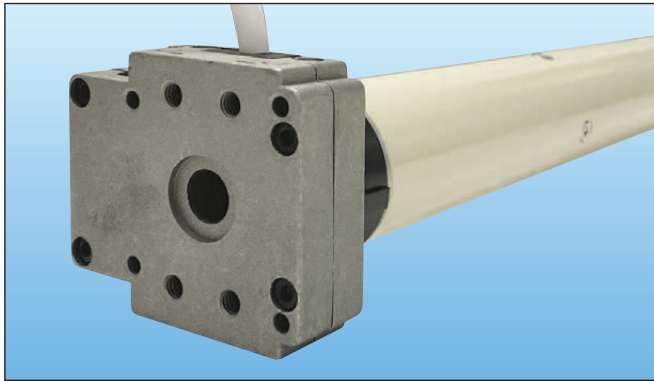


## CW5M 240V WIRED TUBULAR MOTOR (MANUAL OVERRIDE)

Quality, Affordable, Reliable Motorisation With Integrated Manual Override For Roller Shutters & Awnings



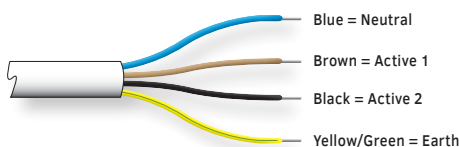
The very affordable and reliable CW5M motor is available in various torques and speeds. This motor includes manual override, ideal for applications that require operation in the event of power failure, eg doorways and access points. It also allows for manual retraction of awnings in high winds when power is not available. You can easily automate heavier applications with a torque up to 50Nm and 12rpm.

### GENERAL TECHNICAL SPECIFICATIONS

Power Supply	240 Volts - 50 Hz
Thermal Cut-Out	4 minutes
Progressive End-Limit Switch Capacity	22 turns
Protection Index	IP 44
Ambient Temperature Of Use	From -10°C to +40°C Exceptionally from -20°C to +70°C
Power Supply Cable	- 4 x 0.75mm <sup>2</sup> wires - 2.5m length, white H05 VVF
Base Diameter For Round Tube	Ø 50 x 1.5mm
Motor Head Thickness	25.3mm

**Installation Note:** Multiple motors cannot be wired to the same switch. A group controller is necessary when operation of 2 or more motors is required from 1 control point. Motors must be wired by a certified electrician. Horizontal mount only. Mounting brackets, crowns and driving wheels to suit tube size must be used with this motor.

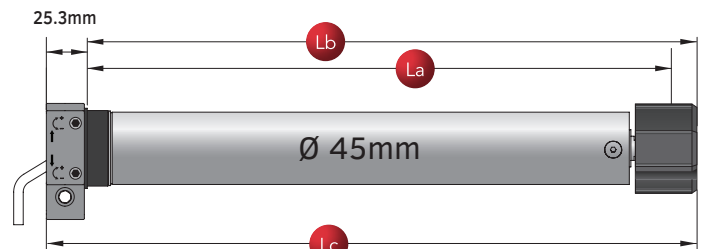
### MOTOR WIRING CONNECTIONS



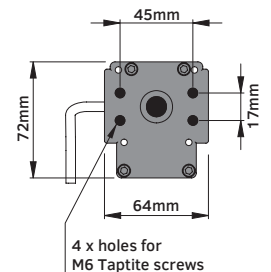
### FEATURES

- High quality & reliable.
- Quiet & energy efficient.
- Available in 2 lifting capacities.
- Easy to set & accurate manual end-limit system.
- Integrated manual override system.
- Thermal cut-out protection system.
- Suitable for a range of adaptations & tube sizes.
- Can be upgraded with CW Products Remote Control.

### MOTOR DIMENSIONS



- La** : Length between the end and the drilling point of the tube
- Lb** : Adapted motor size in the tube
- Lc** : Total motor length



### MODEL NUMBERS & TECHNICAL SPECIFICATIONS

Product Code	Model Number	Torque (Nm)	Speed (rpm)	Power (W)	Current (A)	La (mm)	Lb (mm)	Lc (mm)
30-400-030M	CW5M - 30/15	30	15	204	0.88	544	559	583
30-400-050M	CW5M - 50/12	50	12	232	1.01	565	580	604

General Note: All photos for illustrative purposes only. Technical specifications are correct at time of printing and may change without notice.