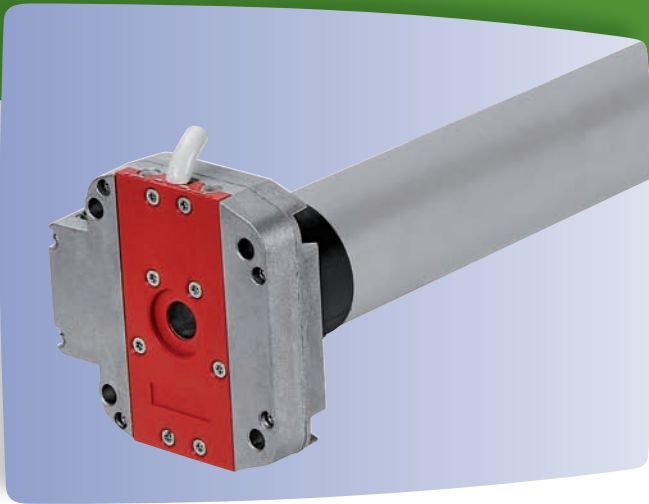


HIGH QUALITY, RELIABLE MOTORISATION WITH INTEGRATED MANUAL OVERRIDE SYSTEM FOR ROLLER SHUTTERS & FOLDING ARM AWNINGS



SIMU T5 DMI

240 VOLT WIRED TUBULAR MOTOR
WITH MANUAL OVERRIDE



QUIET, RELIABLE, EASILY INTEGRATED AND ALWAYS OPERATIONAL

Quiet and reliable, the SIMU T5 DMI range of high performance tubular motors is ideal for motorising applications that need to be operational during mains power failure. It is ideal for use in roller shutter applications for doorways and access points because of its integrated manual override system. The T5 DMI is also ideal for awning applications. In the event of high winds and in a power failure the system can be retracted manually. With 4 torque options from 15Nm to 50Nm you can automate most roller shutter and awning applications. The T5 DMI's compact head design makes it easily integrated and provides easy access to the limit setting screws (accessible on 2 sides of the motor head for easy and quick end-limit adjustments).



FOUR LIFTING CAPACITIES

The high performance T5 DMI is available in 4 different torques (15Nm, 25Nm, 40Nm, 50Nm).

STURDY, QUALITY CONSTRUCTION

SIMU tubular motors are made in France and are reputed for high quality and reliability.

Other features include:

- Heavy duty, easy to set and accurate manual end-limit system with integrated manual override system
- Thermal cut-out protection system
- Suitable for a wide range of adaptations and tube sizes.

UPGRADE WITH REMOTE CONTROL

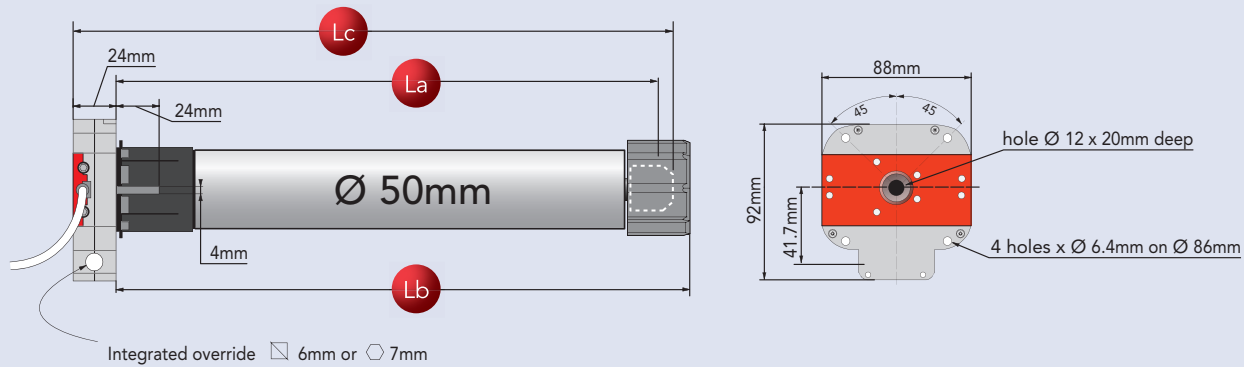
The T5 DMI can be equipped with SIMU Hz Radio Remote Control Technology (using the Hz receiver) and making it compatible with all SIMU automation devices.



CW PRODUCTS
HOME AUTOMATION & ROLLER SHUTTERS



MOTOR DIMENSIONS



- La** : Length between the end and the drilling point of the tube
- Lb** : Adapted motor size in the tube
- Lc** : Total motor length

MODEL NUMBERS & TECHNICAL SPECIFICATIONS

Product Code	Model Number	Torque (Nm)	Speed (rpm)	Power (W)	Current (A)	La (mm)	Lb (mm)	Lc (mm)
30-999-324	T5 DMI - 15/17	15	17	140	0.65	574	588	604
30-999-318	T5 DMI - 25/17	25	17	170	0.80	574	588	604
30-999-321	T5 DMI - 40/12	40	12	240	1.10	574	588	604
30-999-322	T5 DMI - 50/12	50	12	240	1.10	574	588	604

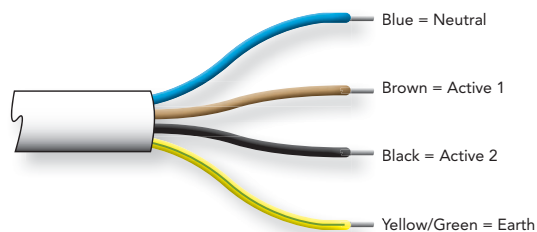
GENERAL T5 DMI TECHNICAL SPECIFICATIONS

Power supply	240 Volts - 50 Hz
Thermal cut-out	4 minutes
Progressive end-limit switch capacity	28 turns
Protection index	IP 44
Ambient temperature of use	from -10°C to +40°C And exceptionally: from -20°C to +70°C
Power supply cable	230V - 4 x 0.75mm ² wires - white HO5 VVF, - 0.7m length
Base diameter for round tube	Ø 50 x 1.5mm
Motor head thickness	24mm maximum
DMI reduction ratio	27/1

Installation Note: Multiple motors cannot be wired to the same switch. A group controller is necessary when operation of 2 or more motors is required from 1 control point. Motors must be wired by a certified electrician. Horizontal mount only. Mounting brackets, crowns and driving wheels to suit tube size must be used with this motor.

General Note: All photos for illustrative purposes only. Technical specifications are correct at time of printing and may change without notice.

MOTOR WIRING CONNECTIONS



INTERNATIONAL STANDARDS



Exclusively distributed in Australia by **CW Products**
 126-138 Port Road Alberton South Australia 5014
Ph: (08) 8341 0120 **Fax:** (08) 8341 1750
Email: info@cwproducts.com.au **Web:** www.cwproducts.com.au

